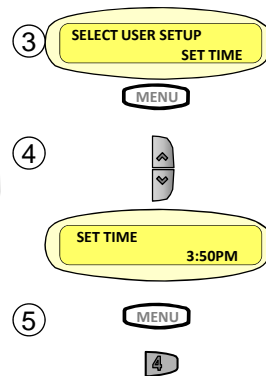


JEP-R VSP Controller Quick Guide

Set Time

1. Turn off all speeds so that no red LED's are on. If a speed is on, press its button to turn it off.
2. Hold down the MENU button for approximately 7 seconds until SELECT USER SETUP is displayed and SET TIME appears in the lower right hand corner. Release the MENU button.
3. Press the MENU button again to select SET TIME.
4. Press the Up or Down* button to change time.
5. When time is correct press MENU to set followed by any speed button to exit.

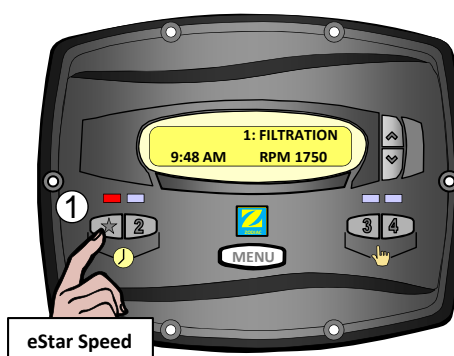
*Tip: Continuously holding the Up or Down button will quickly advance the time.



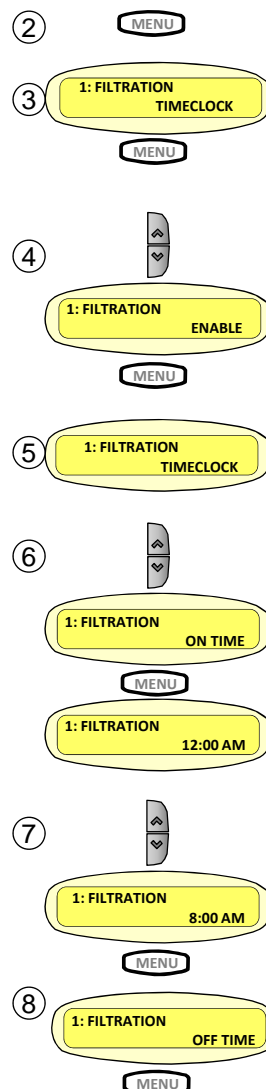
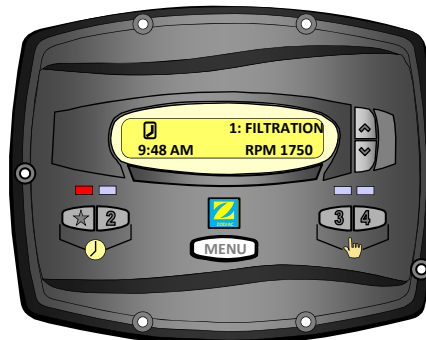
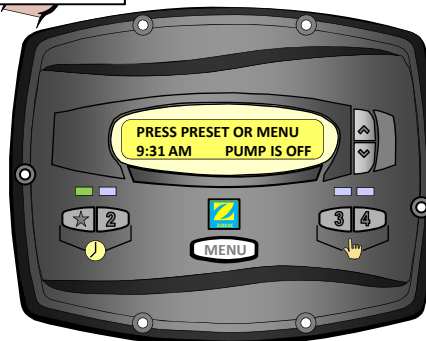
Set Time Clock(s) – eStar(★) & Speed 2

1. Press the speed button, example eStar (★). FILTRATION will appear on the screen.
2. Press the MENU button. TIMECLOCK will be displayed in the lower right had corner.
3. With TIMECLOCK displayed at the bottom of the screen, press MENU to select.
4. Press the UP button to scroll to ENABLE, then press MENU to select.
5. The screen will again show TIMECLOCK in the lower right hand corner.
6. Press the DOWN button to scroll to ON TIME, then press MENU to select. Default ON TIME is 12:00 AM.
7. Press the UP or DOWN* button to change time, then press MENU to save on time.
8. Press the DOWN button and scroll to OFF TIME. Press MENU to select.
9. Repeat steps 6 and 7 to set OFF TIME. Once OFF TIME is set, press any speed button to exit.
10. Repeat steps 1-9 to set program for Speed 2.

*Tip: Continuously holding the Up or Down button will quickly advance the time.



eStar Speed



Time Clock Enable:

When a speed is set to activate by its time clock, but is not on, the LED will be green (enabled).

Speed Activated by Time Clock:

When the speed has been turned on by the time Clock, the LED will be red and a time clock icon will be displayed in the upper left hand corner.

9. Repeat steps 6 and 7 to set OFF TIME.

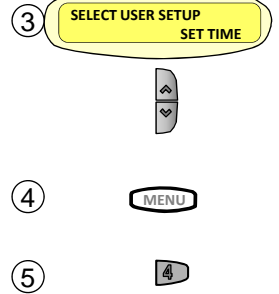
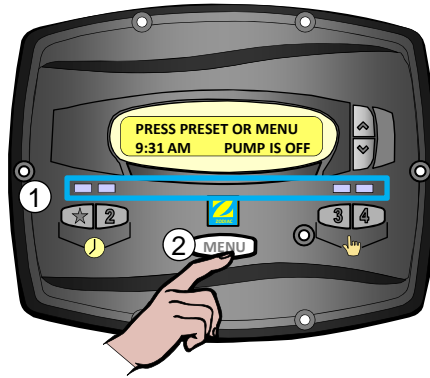


10. Repeat steps 1-9 to set program for Speed 2.

JEP-R VSP Controller Quick Guide

Accessing User Setup Menu

1. Turn off all speeds so that no red LED's are on. If a speed is on, press its button to turn it off.
2. Hold down the MENU button for approximately 7 seconds or until SELECT USER SETUP is displayed and SET TIME appears in the lower right hand corner. Release the MENU button.
3. Press the Up or Down button to scroll through User Setup Menu.
4. Press MENU to select item.
5. Press any speed button to exit.



User Setup Menu Items

SET TIME – Set time of day.

LABEL PRESET – Add labels to speed buttons.

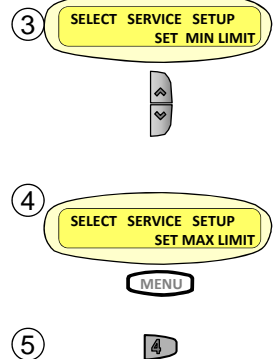
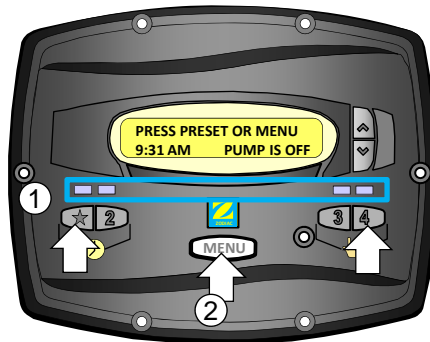
DISPLAY LIGHT – Back light can be set to be continuously on or off, or turn off after a two (2) minute delay.

LANGUAGE – Choose English, French or Spanish

RUN DURATION – Speeds 3 and 4 can be set to have a maximum run time when turned on manually. Run time can be set from 30 minutes to 8 hours, in 30 minute increments.

Accessing the Service Setup Menu

1. Turn off all speeds so that no red LED's are on. If a speed is on, press its button to turn it off.
2. Press and hold the MENU button. While holding the MENU button down, also press and hold down the eStar and Speed 4 buttons for approximately 7 seconds.
3. Press the UP or DOWN button to scroll through the service items.
4. Press the MENU to select Service Setup item.
5. Press any speed button to exit.



Service Setup Menu Items

SET MIN LIMIT – Set the minimum operating speed for the pump.

SET MAX LIMIT – Set the maximum operation speed for the pump.

LOAD DEFAULTS – Returns all settings to default settings.

LAST FAULT – View up to two pump error codes. After exiting codes will be erased.

PRIMING – Set speed and run duration for priming the pump.

SET ESTAR SPEED – Set eStar speed here, all other speeds can be set with the pump on.

PUMP FREEZE PROTECT – Set how long the motor will run and at what speed when freeze conditions exist.

PUMP TYPE – Select ePump. Do not select VSP AC.

DISPLAY POWER USAGES – Displays pump Watts usage on home screen.

Setting eStar Speed (★ Speed 1 – Filtration)

1. Access the Service Setup Menu (see above).
2. Scroll to eStar speed and press MENU.
3. Set speed and press MENU.
4. Press any speed button to exit.

Note: eStar Speed should be set to the lowest speed possible to circulate the pool and meet all equipment minimum flow requirements (e.g. cleaning, chlorination, and heating.)